



Take Productivity on the Road with Mobile Mapping

Do more with fewer resources by taking advantage of state-of-the-art mobile mapping solutions from Trimble. Trimble mobile mapping solutions provide you with easy-to-use, vehicle-mounted data capture systems combined with a complete field-to-finish workflow to help you get your project done in record time.



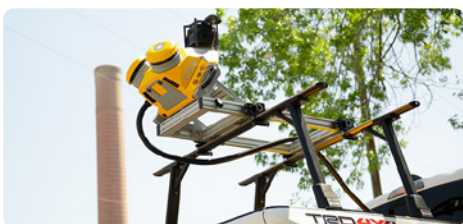
Whatever your project or budget, Trimble's complete portfolio of mobile mapping solutions can fit your specific needs.

Whether your interest is in capturing immersive imagery to create a mapping-based street view application or you are looking to undertake precise survey and engineering projects, Trimble has a mobile mapping solution for you.

With Trimble Mobile Mapping Solutions, you get:

- Fast deployment, data capture and analysis
- Highly efficient, proven analysis workflows
- Versatile, operational flexibility
- Outstanding performance and low cost of ownership
- Field-to-finish, complete workflows

We offer Trimble's complete portfolio of mobile mapping solutions, including complementary software, giving you an easy-to-deploy, complete system. Trimble's advanced software, scanning and imaging solutions give you the power to:



- Rapidly collect enormous amounts of highly accurate, geo-referenced spatial data and transform it into information-rich 3D models
- Plan, design, build and maintain modern infrastructure, while maximizing safety and effectiveness
- Process terabytes of immersive imagery and point clouds for entire cities, highway networks, rail systems and utility corridors collected at highway or railway speeds, often in a single pass.

“Asset managers can use the Trimble MX7 to build a complete inventory for municipal road networks, bridges, buildings, highways and airport infrastructure”

Included in Trimble's mobile mapping portfolio is the MX7 – a highly portable, mobile mapping system ideal for capturing precisely positioned, street-level imagery, including road, infrastructure, and city environmental data. The vehicle-mounted MX7 can be used to capture 360-degree, geo-referenced images at highway speeds to vastly reduce project operating costs while improving public safety.

Asset managers can use the Trimble MX7 to build a complete inventory for municipal road networks, bridges, buildings, highways and airport infrastructure. It is the ideal solution for organizations looking to generate deliverables such as:



- City maps & models
- Geo-located immersive panoramic images
- Change analyses over time
- Road and telecommunication asset inventories
- GIS data capture, extraction and maintenance

Other mobile scanning solutions include:

- MX50 – mobile scanning and imaging for asset management and road maintenance
- MX9 – innovative mobile mapping system for large-scale scanning and mapping missions


Contact your local sales representative to learn more about how these solutions can improve your workflows.

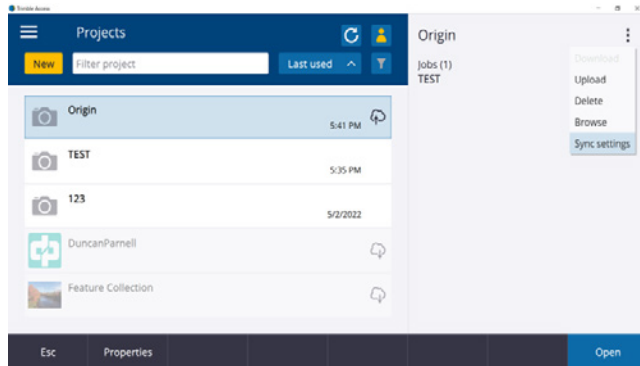


TECH TIP

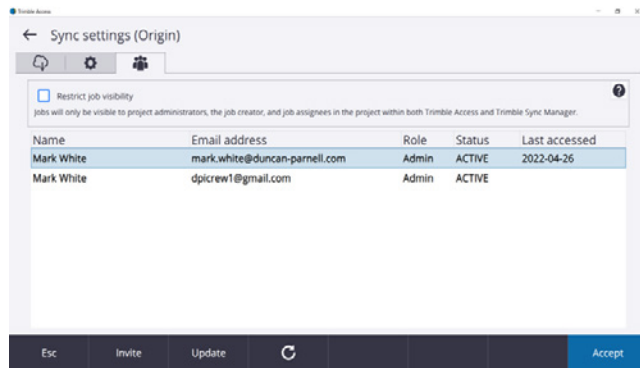
Sharing Trimble Connect Projects in Trimble Access

Starting in Trimble Access 2021.21, Trimble Connect users can now manage their team in Trimble Access.

1. To manage who is assigned to a cloud project, select the project in the Projects screen and then tap the  symbol in the upper right corner and select Sync Settings.



2. Next, select the Team tab.



3. Once in the Team tab you can see the people assigned to the project, their email address, role, status and when they last accessed the project. Use the Invite button on the bottom toolbar to invite others to join the project.



Now Introducing: More Streamlined Customer Support Process!

Whether you're in the field or at the office, we know that getting the support you need, when you need it, is crucial to your operation. To make getting the support you need even easier, we're streamlining our process.

Now, geospatial customers can direct all support inquiries to a single email address or phone number:

support@duncan-parnell.com
or **833-738-2295**

This will make it easier to get the support you need and will allow us to respond to your requests even faster.

EMPLOYEE SPOTLIGHT: DONTE HILL

Meet Donte Hill – Donte joined Duncan-Parnell in August of 2021 as a Geospatial Mapping Solutions sales representative. Donte was born and raised in Portsmouth, VA and is a proud “father of 3 and dad to 7.” He studied at the National Geospatial-Intelligence Agency College and various other defense schools. Donte also spent 10 years as a 12Y Geospatial Intelligence Analyst in the United States Army and completed two deployments to Iraq with a focus in Asymmetrical Warfare and Human Geography. For four years, Donte worked as a GEOINT (Geospatial Intelligence) Data Standards Analyst at the National Geospatial-Intelligence Agency working on map production spec and data models for the NSG (National System of Geospatial-Intelligence). Needless to say, Donte has a plethora of geospatial and mapping experience, but when he's not working, he likes to spend his free time rucking, biking or on the range, and he always enjoys learning new things.



News & Updates

Trimble X7 Firmware Update 2.4.23

This update includes improved Wi-Fi security and corrects an issue with movement detection and leveling after running diagnostics or calibration reports

Trimble Releases New Catalyst Handle Accessory

With this accessory, the Catalyst DA2 GNSS receiver is transformed into a compact, lightweight, handheld data collector

Forensics Regional Trimble CenterPoint RTX Now Available

This subscription is tailored to work specifically with the Trimble Forensics portfolio of GNSS receivers, giving Forensics professionals access to satellite-delivered, centimeter-level GNSS accuracy

Trimble Business Center Monitoring v5.60

New version reduces the time it takes to create monitoring reports using automated imports from Trimble Access Monitoring

Trimble Inpho Version 12.2 Now Available

This version speeds up production by reducing the processing times in the generation of dense point clouds, true orthophotos and meshes

Microdrones Releases mdCockpit 2022.1

Includes more options for flight planning and improved user experience



Trimble Catalyst Handheld
Accessory In Use

Time Is Running Out to Register for Trimble Dimensions!

Trimble's biggest user conference, Dimensions, is quickly approaching, but there's still time to save and register at a lower rate by purchasing your ticket before September 1, 2022.

Dimensions will be happening in Las Vegas, November 7-9, 2022, and it's going to be jam-packed with tons to do and see. This three-day conference brings together a global community of diverse industry pros for hands-on learning, networking, insightful courses and plenty of fun. Attendees will enjoy interactive demos, hands-on workshops, in-depth training, special events, big fun and unlimited inspiration.

Dimensions will also be filled with keynote presentations by visionary leaders on actionable ideas for boosting your business and timely topics that are impacting today's industry leaders:

- Reviving the US Infrastructure
- Building the Workforce of the Future
- How Sustainability Drives Innovation
- The Power and Potential of Automation



We hope to see you there!





WAVELENGTHS

OVER 20 YEARS OF GEOSPATIAL NEWS / Issue 2 - 2022

In This Issue

- Feature Story – Streamline & Simplify Your Imaging Tasks with Trimble Mobile Scanning
- Tech Tip: Sharing Trimble Connect Projects in Trimble Access
- Now Introducing: More Streamlined Customer Support Process!
- News & Updates
- Time Is Running Out to Register for Trimble Dimensions!
- Employee Spotlight: Meet Donte Hill
- Duncan-Parnell Expands to Jacksonville, FL with Acquisition of Pro-Line Survey Supply
- Upcoming Events/Conferences



YOUR TRIMBLE SURVEY & MAPPING CONNECTION
IN THE CAROLINAS, DC, DE, FL, GA, MD, TN, VA & WV

Duncan-Parnell Expands to Jacksonville, FL with Acquisition of Pro-Line Survey Supply



From left to right: Trey Nettuno (Instrument Repair), Keith Minshew (Branch Manager) and Lynn Pye (Customer Service)

We're thrilled to announce that we're further expanding and strengthening our presence in Florida by acquiring Pro-Line Survey Supply, a distributor of geospatial positioning equipment, serving mapping and surveying professionals in the Jacksonville-metro area for the past 24 years. This acquisition, which was finalized earlier this year, allows us to increase our offering of Trimble geospatial products and services to survey and mapping professionals and engineers in the state. We're excited to have the Pro-Line team join us, and we look forward to building upon the support and solutions they've provided customers for the past 24 years.

Upcoming Events/Conferences 2022

JUNE

- 9-11 SC Engineering Conference & Trade Show, North Charleston, SC
- 13-16 IPTM's Symposium on Traffic Safety, Orlando, FL

JULY

- 20-23 67th Annual FSMS Conference, Palm Beach Gardens, FL
- 24-29 SCARS/Southeastern Annual Conference, Mt Pleasant, SC

AUGUST

- 4 35th Annual TUgis Conference, Towson, MD
- 8-10 2022 FRWA Annual Conference, Daytona Beach, FL
- 10-12 2022 TAUD Business Conference and Exhibit Hall, Gatlinburg, TN
- 16-18 NC Traffic Safety Conference & Expo 2022, Raleigh, NC
- 30-9/2 Chesapeake Tri-Association Conference 2022, Ocean City, MD